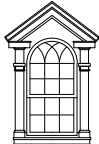


7004 MILLWOOD ROAD  
CARTER, INC.

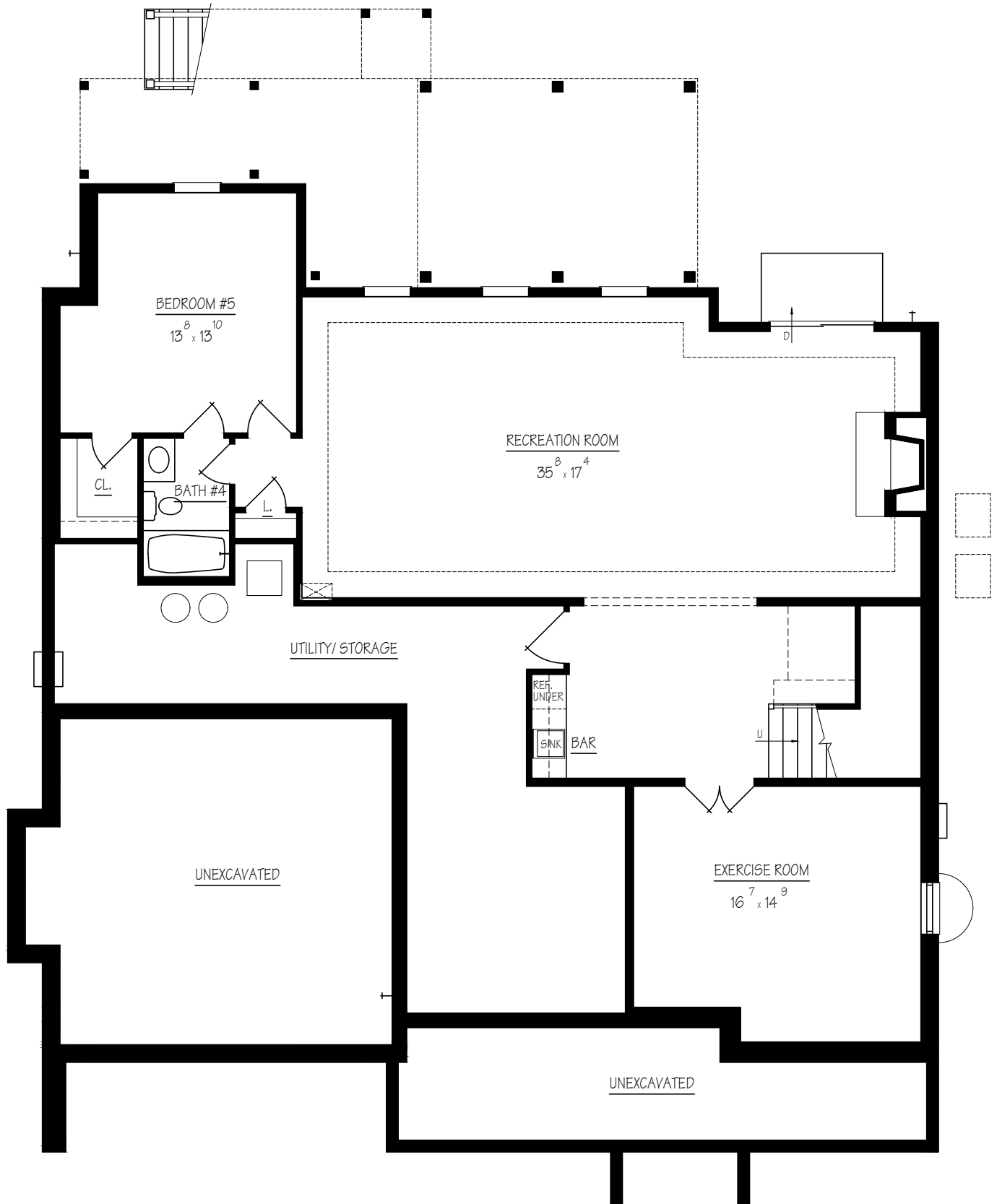


FRONT ELEVATION  
RENDERING ONLY: ELEVATION MAY VARY



**CLAUDE C. LAPP**  
— ARCHITECTS LLC —  
301-881-6856

7004 MILLWOOD ROAD  
CARTER, INC.



BASEMENT FLOOR PLAN

1422 SQ. FT. FINISHED

397 SQ. FT. UNFINISHED

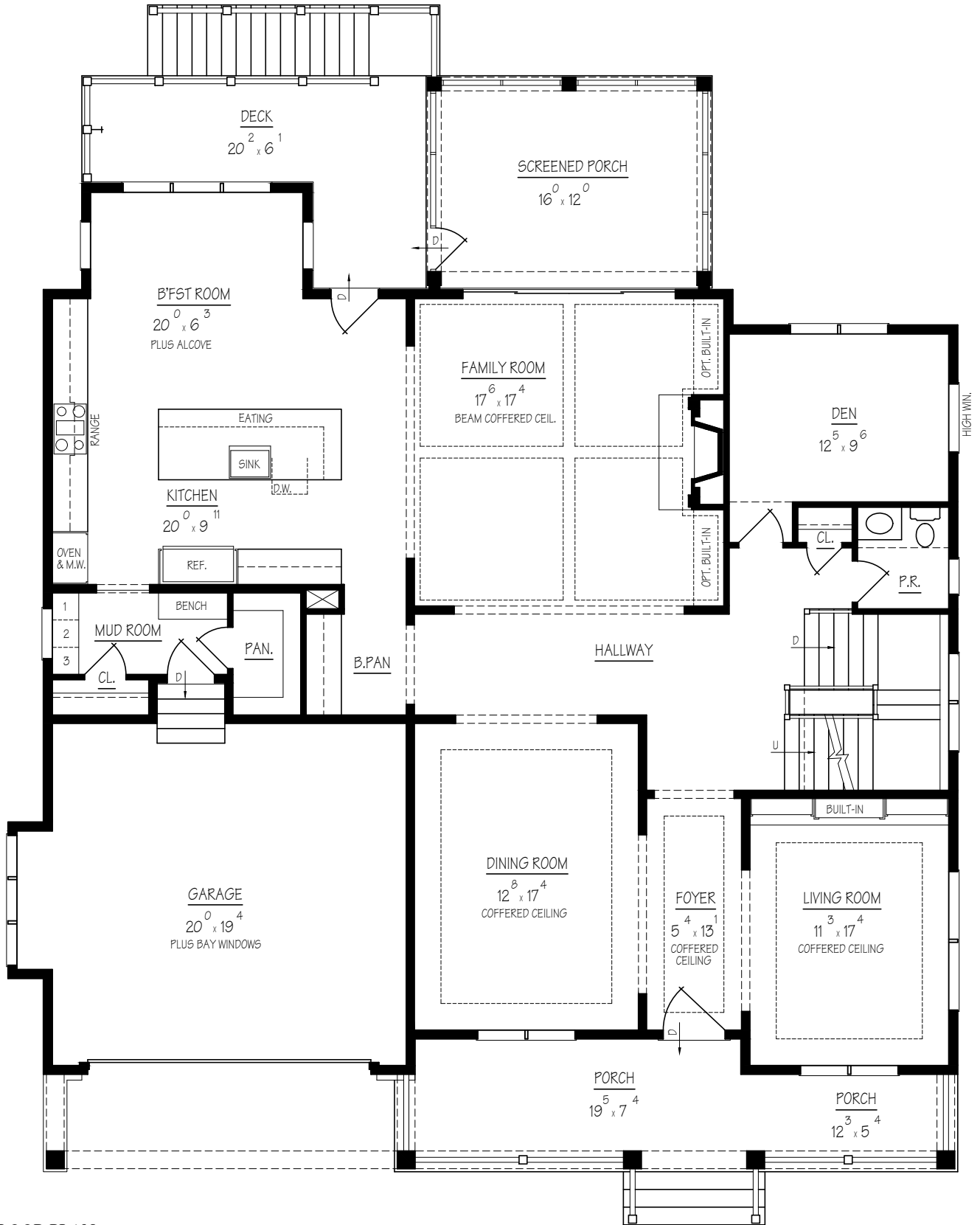
RENDERING ONLY: DIMENSIONS MAY VARY



**CLAUDE C. LAPP**

— ARCHITECTS LLC —  
301-881-6856

7004 MILLWOOD ROAD  
CARTER, INC.



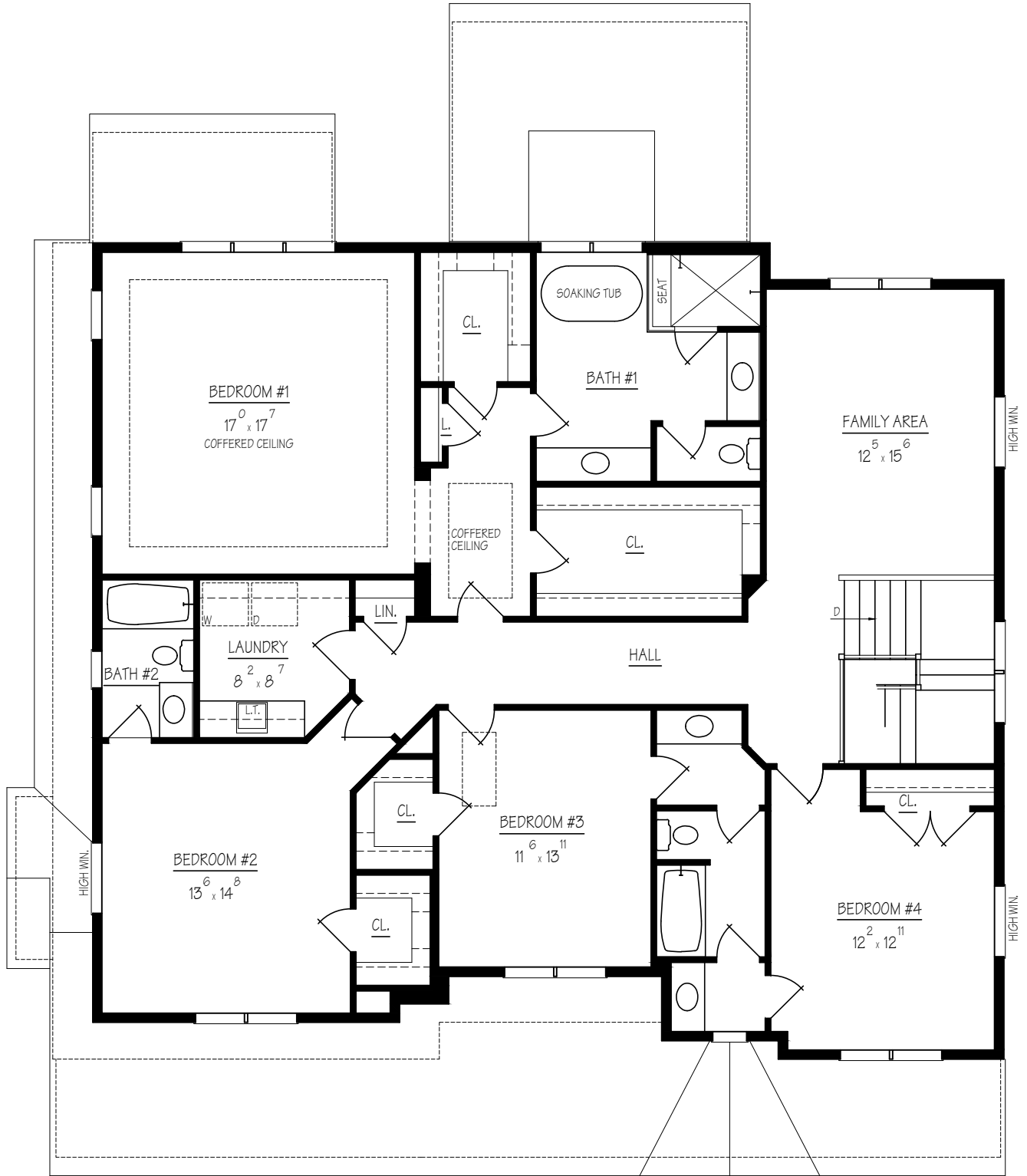
**FIRST FLOOR PLAN**

1899 SQ. FT. MAIN  
 408 SQ. FT. GARAGE  
 212 SQ. FT. FRONT PORCH  
 192 SQ. FT. SCREENED PORCH  
 158 SQ. FT. DECK  
 RENDERING ONLY; DIMENSIONS MAY VARY



**CLAUDE C. LAPP**  
 — ARCHITECTS LLC —  
 301-881-6856

7004 MILLWOOD ROAD  
CARTER, INC.



SECOND FLOOR PLAN

2069 SQ. FT. MAIN

RENDERING ONLY: DIMENSIONS MAY VARY



**CLAUDE C. LAPP**

— ARCHITECTS LLC —  
301-881-6856